



HEALTHCARE SEATING

CREATE
A BETTER
EXPERIENCE



Examination Rooms

OXFORD LOUNGE CHAIR

In some ways, caregivers and patients have similar concerns when in the examination room. It is important that the space and the furnishings add to the experience from both sides.

Models

- Armchair
- 2 seater
- 2.5 seater

Dimensions

See website



Nurse / Caregiver station

JIRRA TASK CHAIR

Workstations and office spaces all need functional ergonomic seating that is appropriate for the environment and people that need to use it.

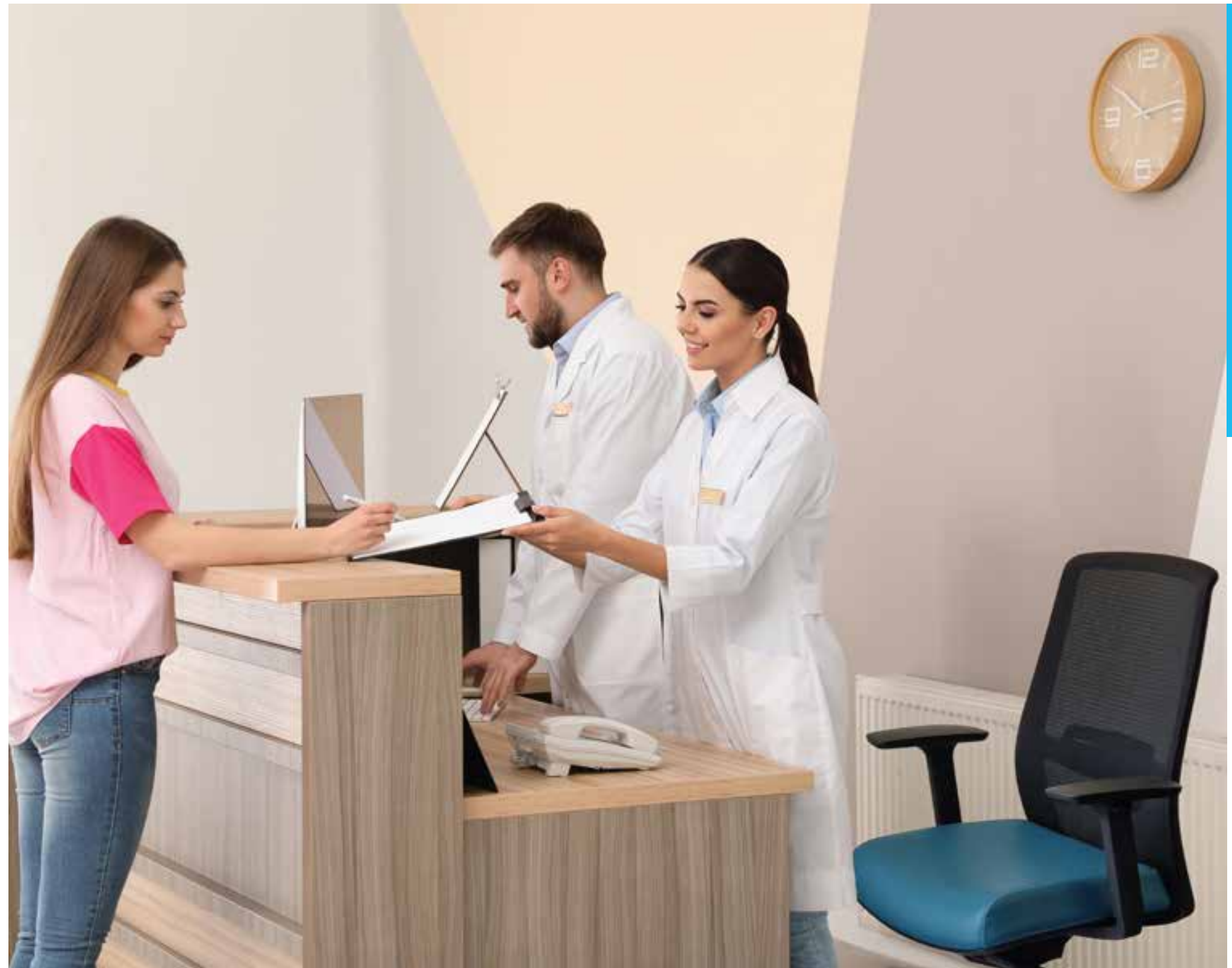
Models

Arms / No arms

Headrest

Dimensions

See website



Patient / Waiting

FRANKLIN TUB CHAIR

Better patient experience is often associated with better outcomes, patient needs along with practical finishes and furnishings can combine to create a space that can make a positive contribution to the process.

Models

Tub chair
2 seater

Dimensions

See website



Working / Community / Patient rooms

WINDSOR PATIENT/ LOUNGE CHAIR

The Windsor works really well in so many healthcare settings. Upholstery finishes can be customised to fit the need, using fabrics or PU finishes, with contrasting colours or matching. The hardwood timber legs can be stained to colour for the complete coordinated finish.

Models

Armchair

2 seater

Dimensions

See website



Community / Waiting

CAMBRIDGE LOUNGE CHAIR

Every space should be fit for purpose, but not just one purpose. Everything should be considered from cleanability to colour and function. Custom specifications may be required to meet height, size or even weight capacity requirements.

Models

- Armchair
- 2 seater
- 2.5 seater

Dimensions

See website



Patient / Community

YORK PATIENT/ LOUNGE CHAIR

Providing a variety of options for patient rest can make a huge difference to a patient's stay. Careful choice of all the furniture that makes a room, will ensure it is appropriate for a wide variety of patients.

Models

Armchair

Dimensions

See website



Café / Dining

DEVON DINING CHAIR

Classic features for Aged Care and Healthcare define the DalCare Devon chair. Easy to clean, a great height, and armrests that are easy to grab when you want to stand up.

Stain the frame to match your fitout, or change the dimensions to suit your needs, DalCare Devon can be customized to fit in with the look you are after.

Models

Armchair
No arms
Bariatric

Dimensions

See website



Breakout / Café / Dining

ACTI STOOLS AND SIDE CHAIRS

The Acti chair is great for dining and breakout areas, with 17 colours in the range and a variety of upholstered options Acti can bring life to a variety of spaces. Acti is also ideal for training or meeting rooms, many of the 20 different base options are stackable, easy to clean and very durable, Acti can bring a breath of fresh air to any space.

Models

- Side chair
- Arms / no arms
- Sled or 4 leg base
- Barstool - 2 heights
- Seat pad or upholstered
- 17 standard colours
- More than 20 base options

Dimensions

See website



Treatment / Imaging

NORJ SADDLE CHAIR

Special supportive ergonomic seating is essential, particularly when unusual and awkward postures are a part of the job. Dals Norj Saddle chair is one in a range of specialist saddle and perching stools that can provide excellent support for many roles in medical environments.

Models

Saddle stool

Dimensions

See website



Doctor / Nurse / Caregiver

ERGOSELECT™ SPARK CHAIR

Caregivers need good ergonomic chairs that are easily adjusted and available in cleanable finishes that meet all the requirements for a medical environment. ErgoSelect™ Spark chairs have long been associated with hospitals and medical clinics all over Australia.

Models

- Chair no arms
- Chair with arms
- Large and small seat options
- 4 back options

Dimensions

See website



Waiting / Meeting

URBIN VISITOR/MEETING CHAIR

Simple clever design hides a lot of important features. How many waiting rooms have that horizontal line on the wall where the chair backs are continually pushed up against the wall. Urbin has a clever wall saver leg design that makes sure the back doesn't touch the wall. Strong frame and a generous width between the arms make this a great waiting room chair.

Models

Armchair

Chair no arms

Meeting chair on castors

Dimensions

See website



Meeting / Training / Conference

LANZA MULTI-PURPOSE

Versatility is the key with any multi-function space and often our meeting rooms double up for staff training or an in-service. Lanza chairs on castors are so easy to move around to new configuration. Whilst the seat and backrest have natural movement built in so you can easily change posture when the session gets a bit long.

Models

Armchair

Armchair on castors

Dimensions

See website





**CONTACT US TODAY TO FIND OUT HOW
WE CAN HELP YOU ACHIEVE YOUR GOALS**

☎ 1300 720 608

@ sales@ascotcommercial.com.au

🌐 www.ascotcommercial.com.au

VICTORIA

Level 14, 330 Collins Street,
Melbourne VIC 3000

TASMANIA

19-20 Marine Terrace,
Burnie TAS 7320

